

**PLASMA CUTTING**

**Replacement Torch Head Kit for:  
Hypertherm<sup>®</sup> SmartSYNC<sup>®</sup>**

***UPH-125 75°***

**KIT 65A**      Code 05900-SY02

**KIT 85A**      Code 05900-SY03

**KIT 105A**    Code 05900-SY04

Higher performances

Cleaner cut

Faster speed

With this KIT, owners of SmartSYNC® cutting systems will enjoy significant savings in the purchase of consumables.

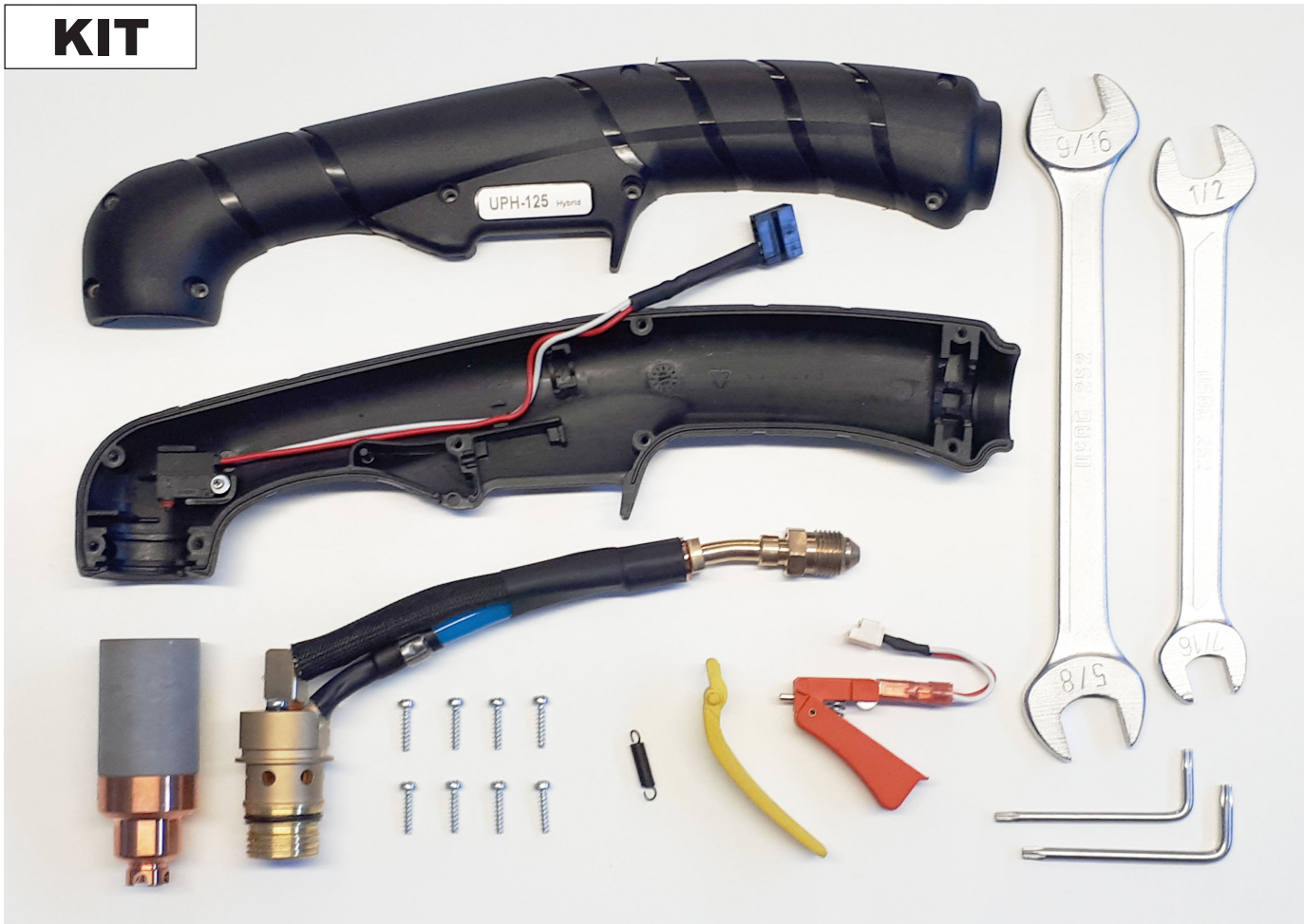
By replacing the torch body and the handle with easy operations, the dependence on expensive and bulky cartridges will cease to return to lower dimensions and operating costs.

The Kit contains all the components necessary for the Upgrade, including the specific tools. The kit includes a high-performance cartridge to start working immediately.

#### KIT composition:

- 1 - UPH-125 Torch Body, 100Amps at 100%
- 1 - CE ergonomic handle complete with wiring
- 1 - Torx T08 key
- 1 - Torx T10 key
- 1 - 1/2" wrench
- 1 - 5/8" spanners
- 1 - UNICUT Cartridge **UNICUT®**

## KIT



**Step 1**

Turn off the generator.  
Disconnect the torch from the generator.  
Place the torch on a clean work surface.

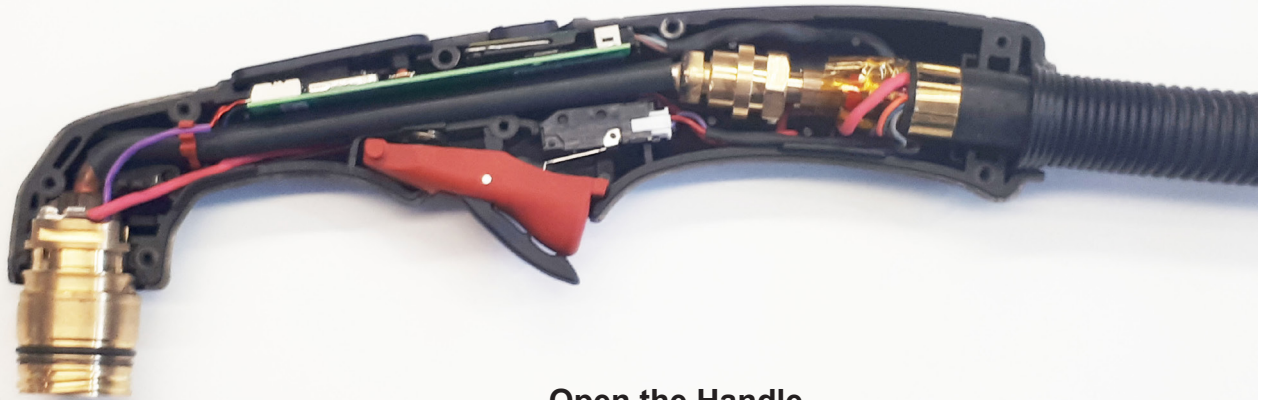
Remove the cartridge.

**Step 2**

Remove the 7 screws from the handle.  
Use the TORX T10 key supplied.

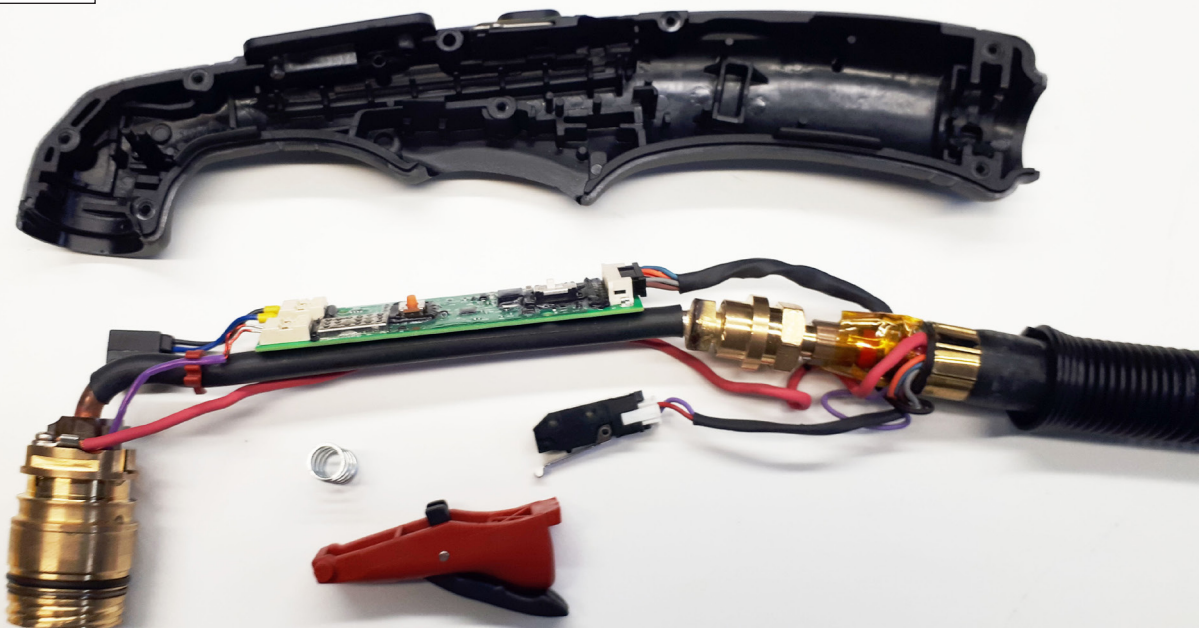


## Step 3



Open the Handle.

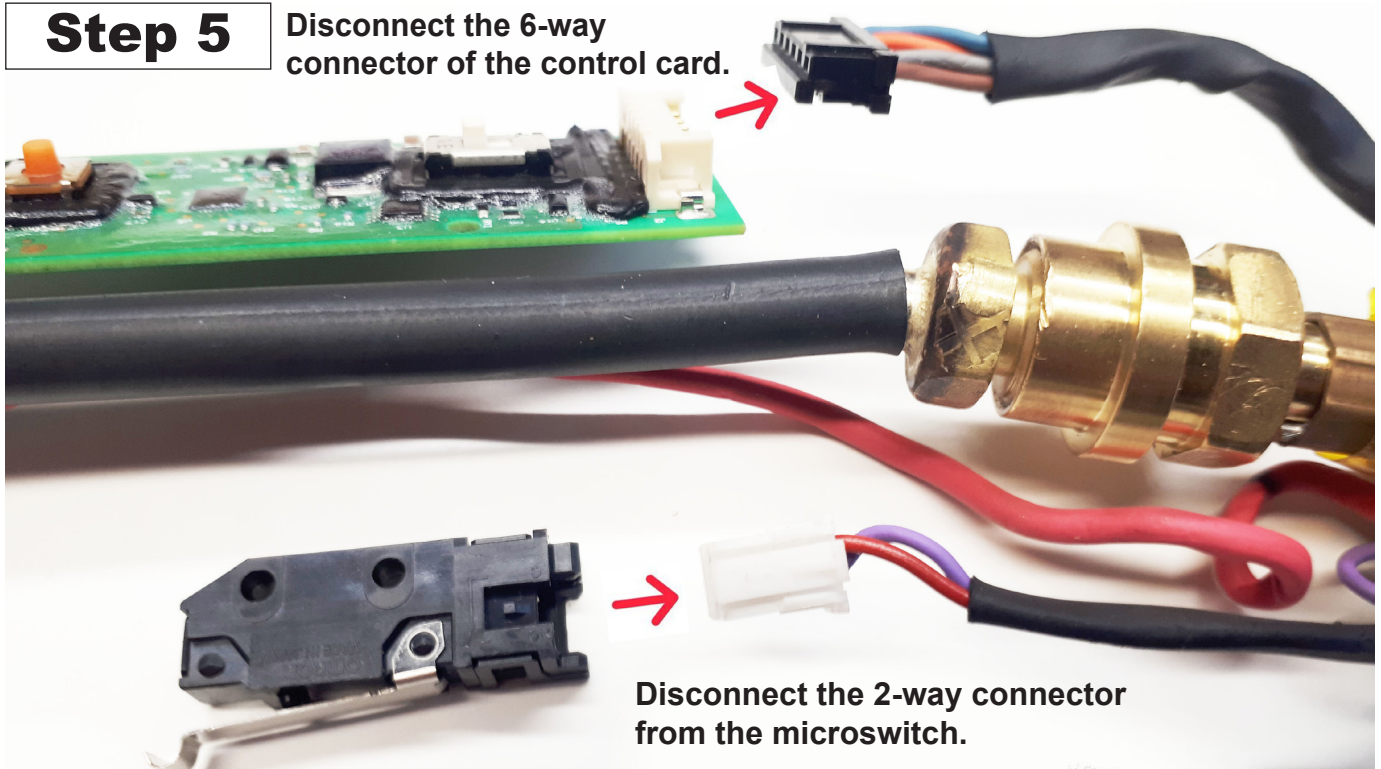
## Step 4





**Step 5**

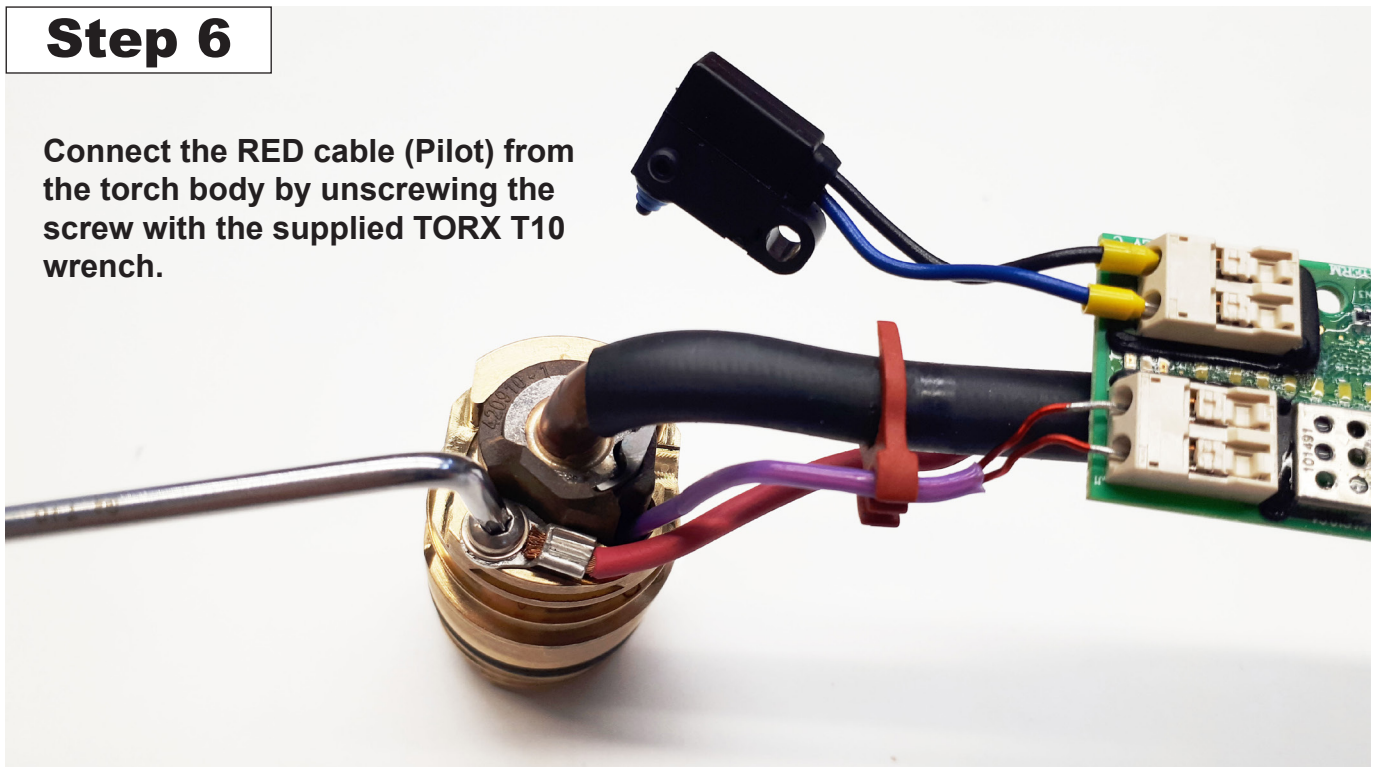
Disconnect the 6-way connector of the control card.



Disconnect the 2-way connector from the microswitch.

**Step 6**

Connect the RED cable (Pilot) from the torch body by unscrewing the screw with the supplied TORX T10 wrench.



**Step 7**

Unscrew the Torch Body from the cable using the 1/2" and 5/8" wrenches supplied.

**1/2"****ATTENTION**

The parts are joined with sealant. Use a fair amount of force to unscrew.

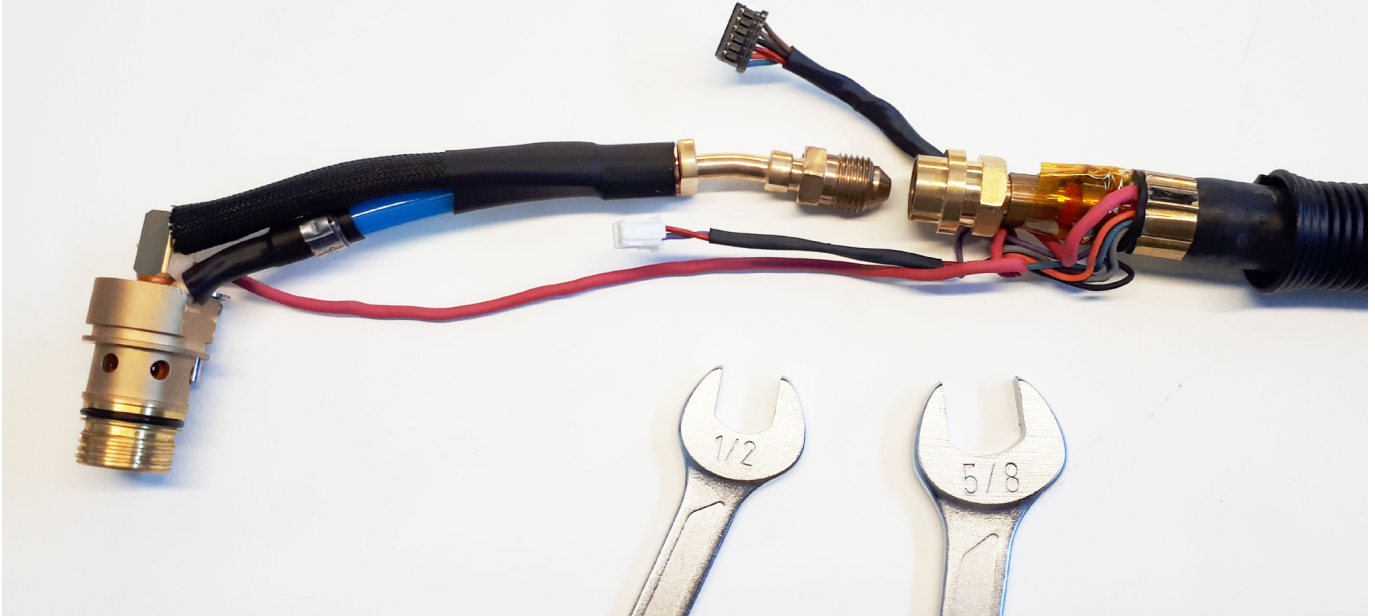
**5/8"****Step 8**

Make sure you have completely disconnected the torch head and control board from the cable.

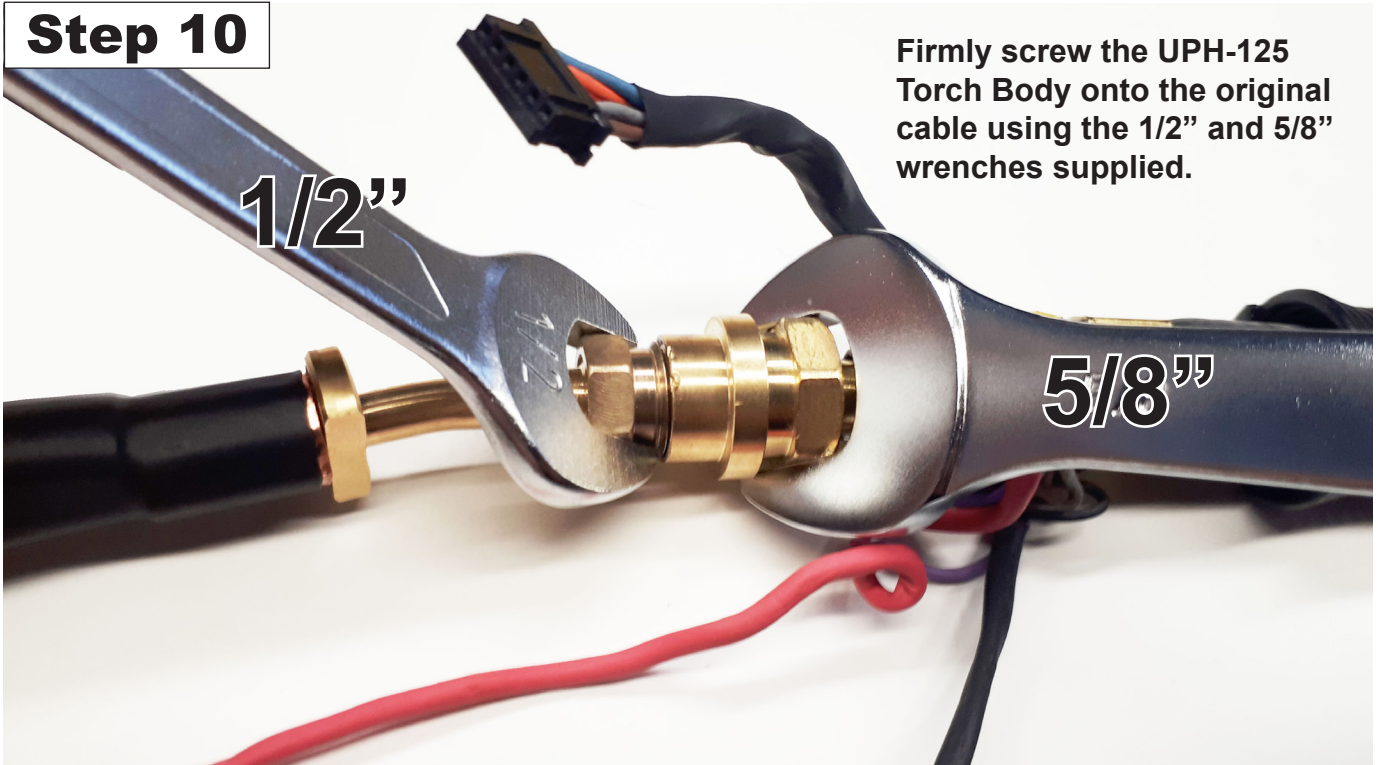


**Step 9**

Prepare the UPH-125 Torch Head for assembly.

**Step 10**

Firmly screw the UPH-125 Torch Body onto the original cable using the 1/2" and 5/8" wrenches supplied.



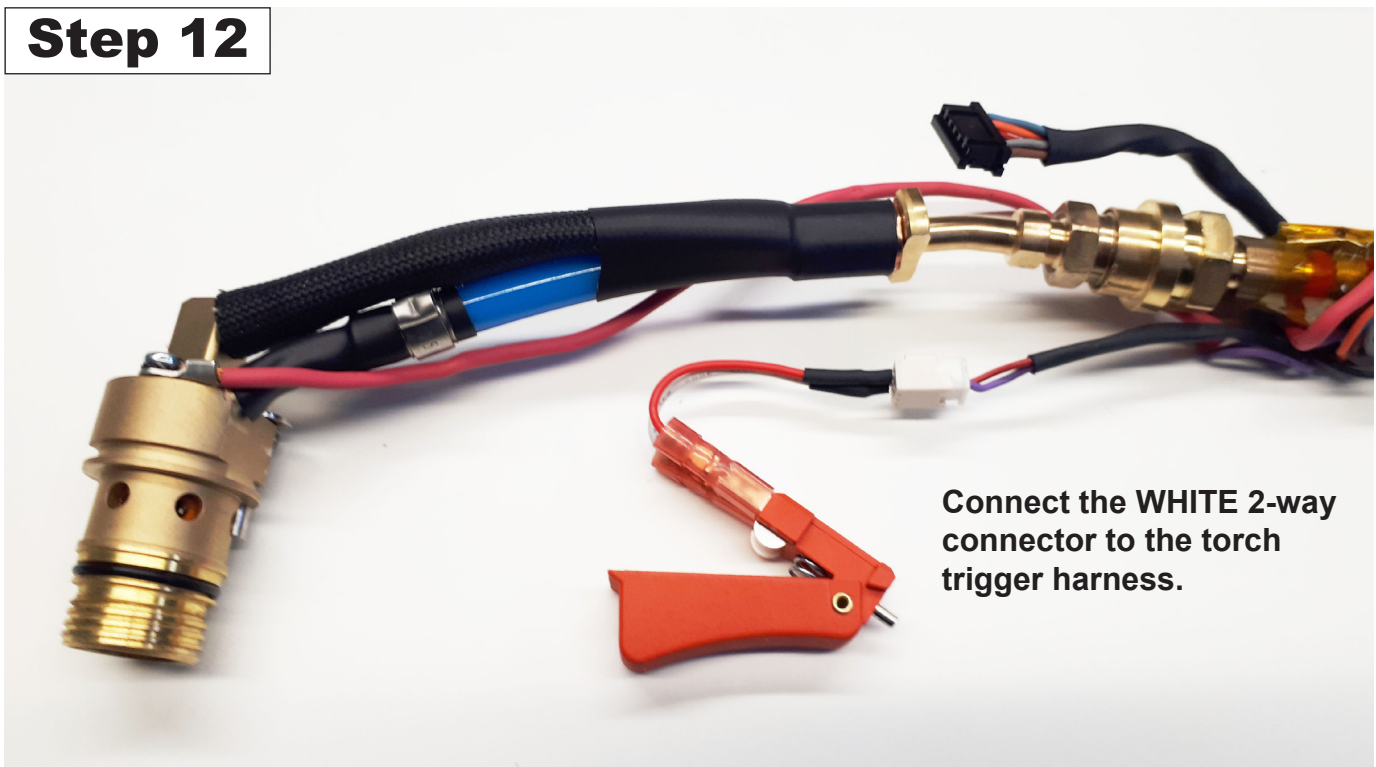


**Step 11**

Connect the RED cable (Pilot) with the screw and washer provided, using a PH1 screwdriver (not included).

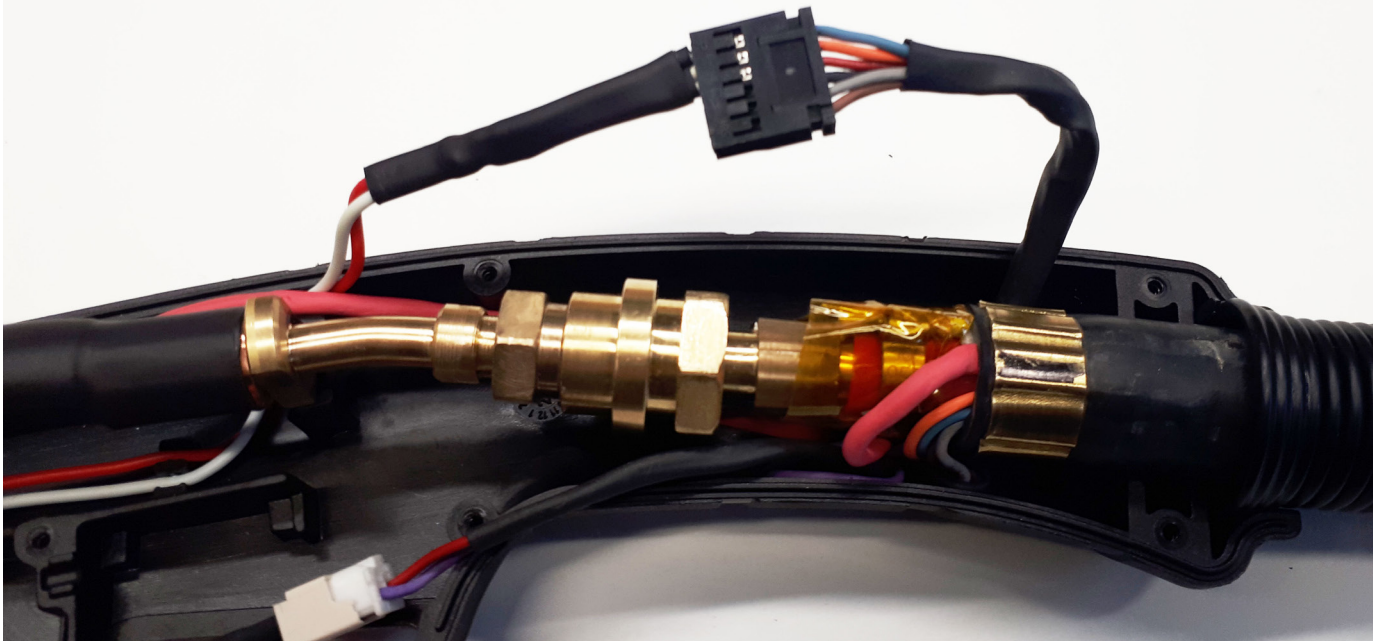
**Step 12**

Connect the WHITE 2-way connector to the torch trigger harness.

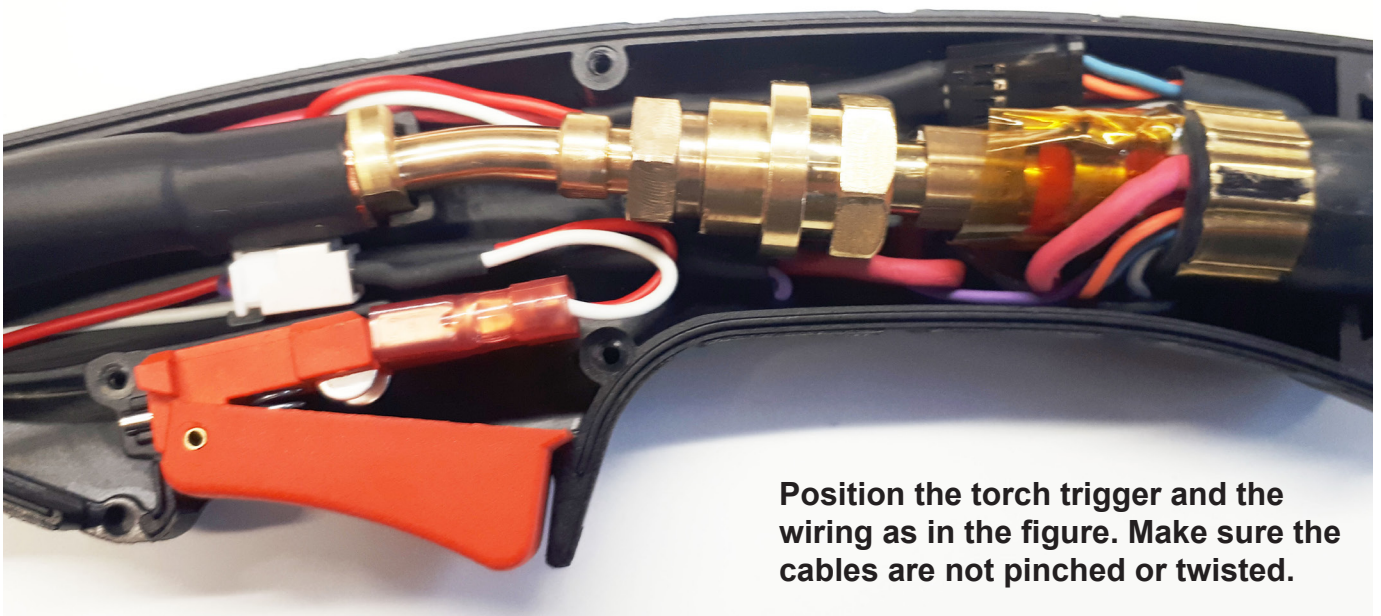


**Step 13**

Insert the Torch Body into the handle.  
Connect the 6-way connector on the safety circuit harness.

**Step 14**

Position the torch trigger and the wiring as in the figure. Make sure the cables are not pinched or twisted.





**Step 15**

Place cable and spring in the space provided.



Position the **YELLOW SAFETY** lever and relative spring in the appropriate housing.

Check the correct positioning of all parts.

**Step 16**

Close the handle manually, check that all cables are inside, tighten the 8 screws with the supplied TORX T08 key.



**Step 17**

Check that the internal piston moves axially without friction. If the piston does not move freely, reopen the handle and check the positioning.

**Step 18**

Screw the **UNICUT**® cartridge (included in the KIT) on the UPH-125 Torch Body.



**TURN OFF** the generator. Connect the torch to the generator.

**TURN ON** the generator. At the first start, an alarm signal appears on the display.

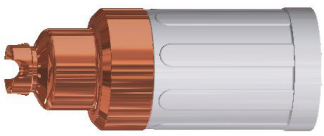


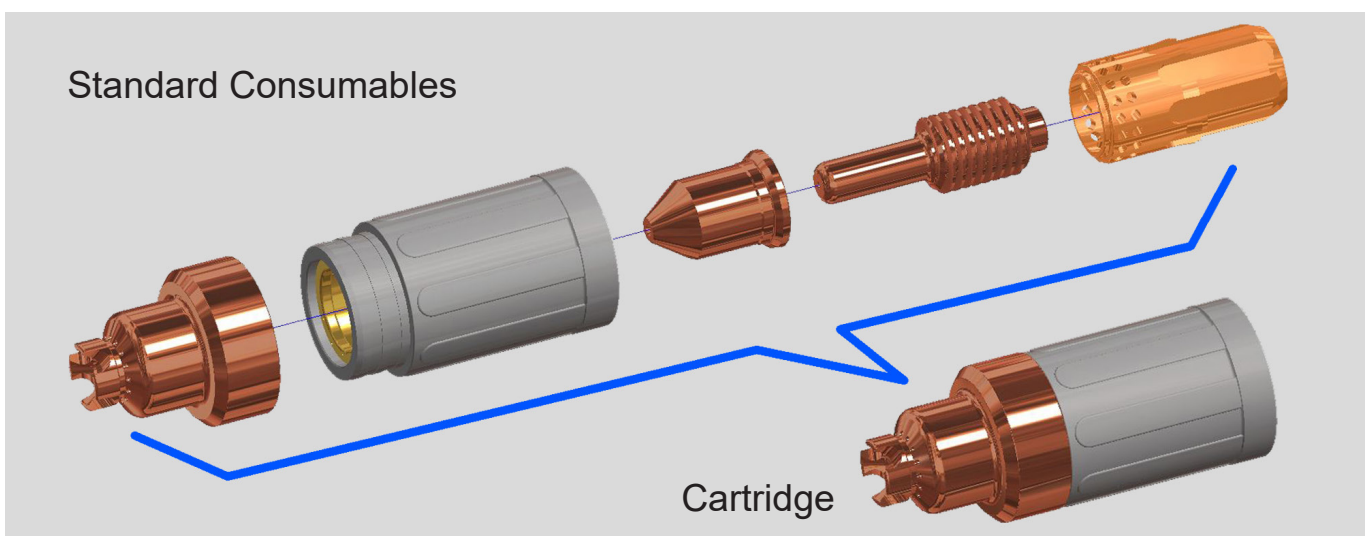
The **ALARM** switches off automatically by turning the potentiometer on the front of the machine.

**Adjust the cutting current according to the consumables on the torch. Now you can start working.**

# UNICUT®

## Single-use cartridges PLUG and CUT

Hand	Code	Description
	53641M	Cartridge UPH-125 45A hand cutting
	53642M	Cartridge UPH-125 65A hand cutting
	53643M	Cartridge UPH-125 85A hand cutting
	53644M	Cartridge UPH-125 105A hand cutting
<b>Gouging</b> 	53654M	Cartridge UPH-125 65/85A Gouging
	53655M	Cartridge UPH-125 105A Gouging
<b>Extended</b> 	53659M	Cartridge UPH-125 65A Extended hand cutting
	53660M	Cartridge UPH-125 85A Extended hand cutting
	53661M	Cartridge UPH-125 105A Extended hand cutting
<b>FLATCUT®</b> 	53632	Cartridge UPH-125 40/70A FLATCUT
	53633	Cartridge UPH-125 80/105A FLATCUT



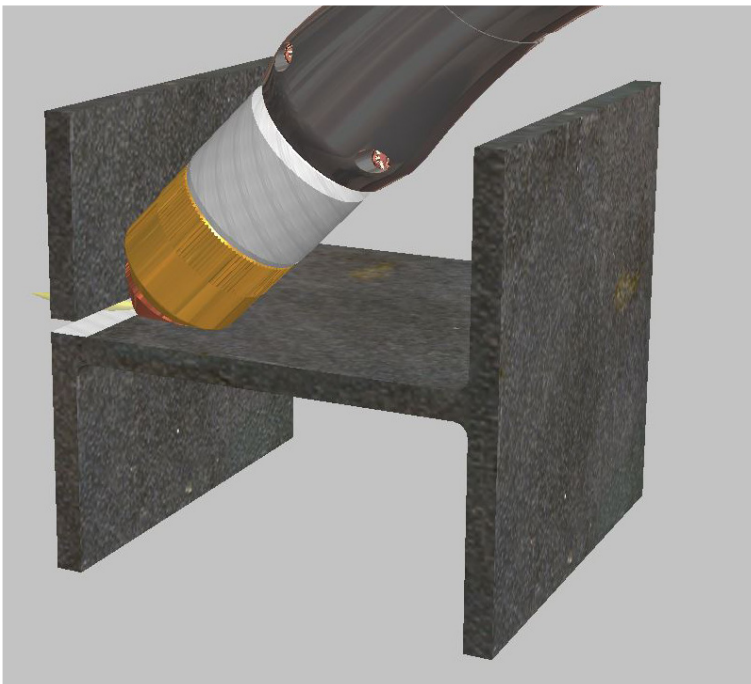
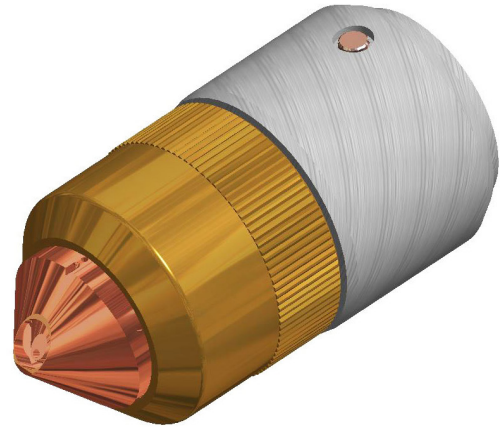
The standard consumables can continue to be used on the UPH-125 torch head.



# ACCESSORIES

## FLATCUT®

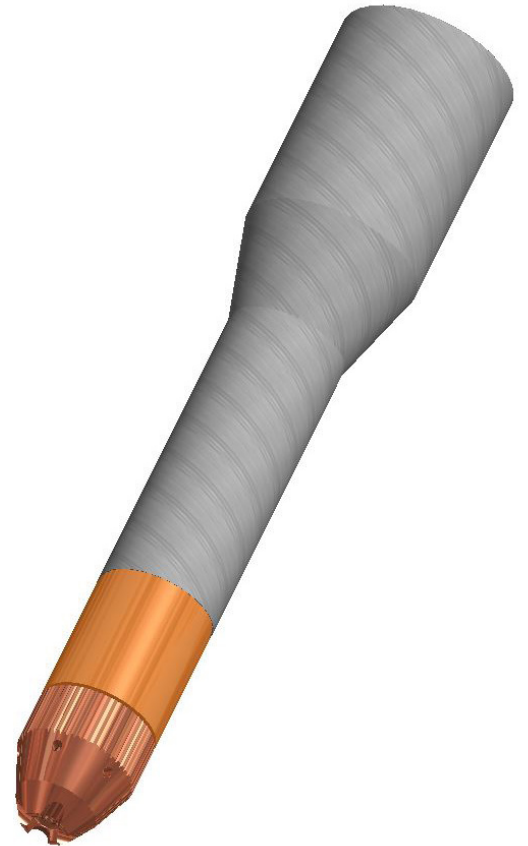
with 45 degree inclined arc for cutting Flat



# ACCESSORIES

## **AIRONCUT**®

New high visibility consumable system  
to cut inaccessible parts.



**35+**  
Years

**TEC.MO.**  
=

Quality  
Technology  
Innovation